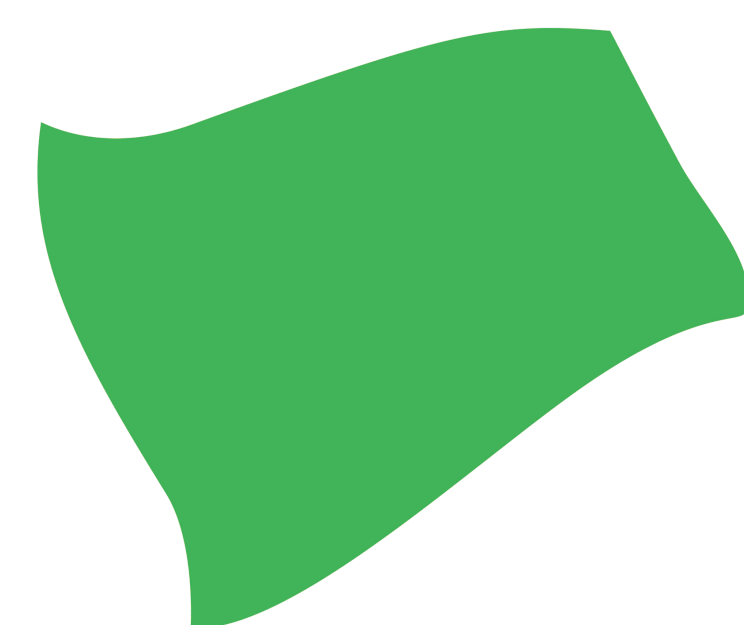


# FLAG MEANINGS



## **GREEN FLAG**

All Clear. Can also be used if necessary to signal the start of warm up laps or practice sessions.



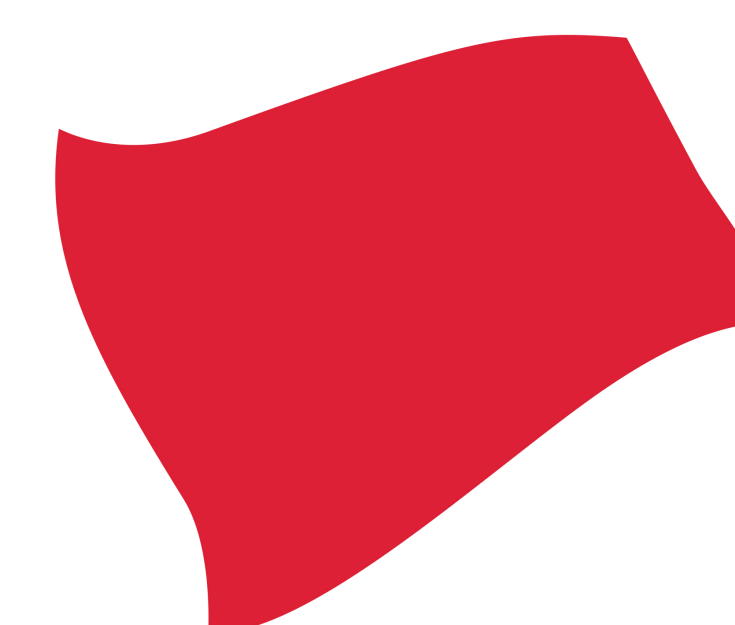
## **GREEN WITH YELLOW CHEVRON FLAG**

Restart. Reform on Track. To be used by the Starter and /or Clerk of the Course in the event of an error of judgement by the Starter.



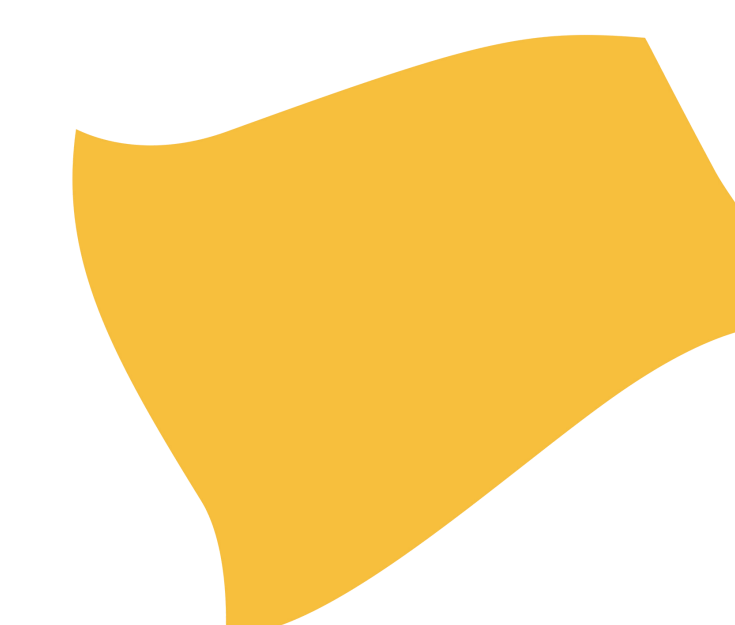
## **RED AND WHITE CHEQUERED FLAG**

False start or no start, return to pits.



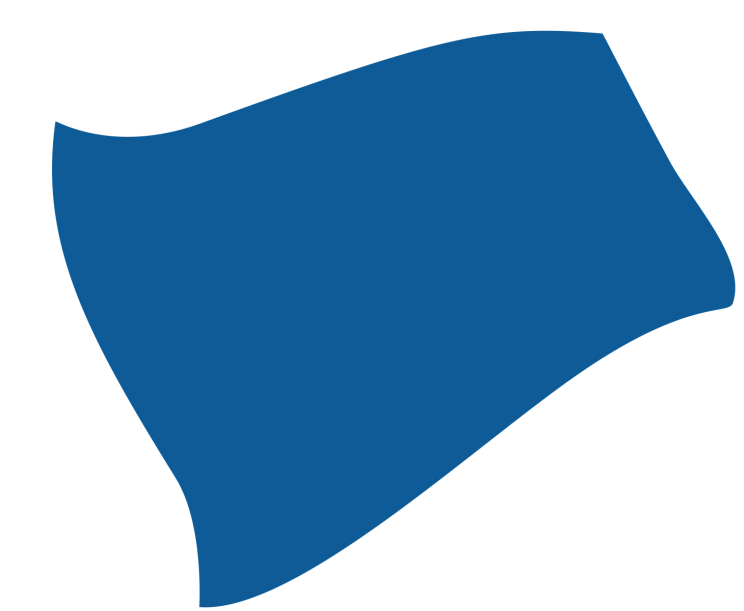
## **RED FLAG**

All racing must cease. No overtaking is permitted. Drivers will indicate by raising their arm and return to the grid at slow speed.



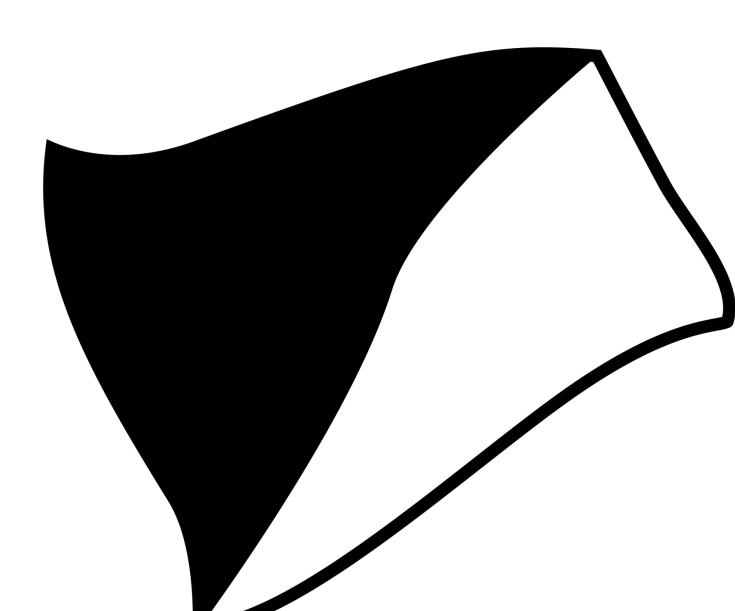
## **YELLOW FLAG**

Danger ahead. Reduce speed, do not overtake and be prepared to change direction. Hazard ahead.



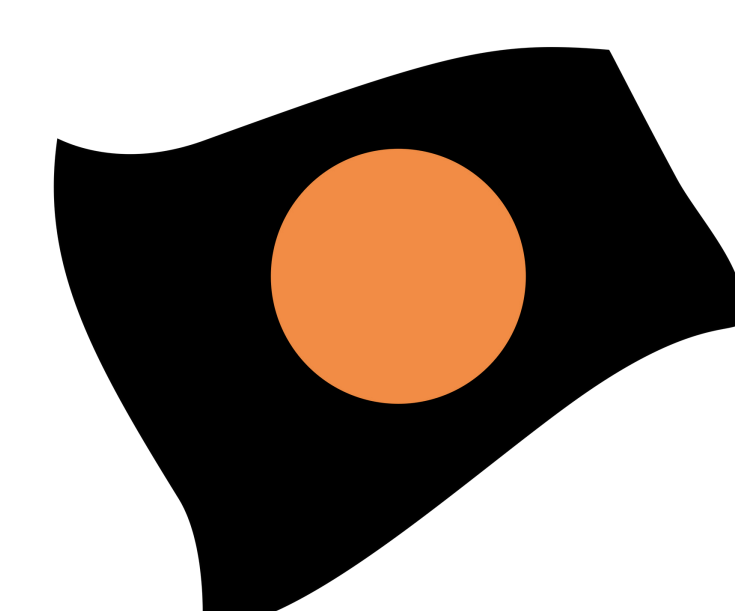
## **BLUE FLAG**

You are about to be lapped by one or more Competitors.



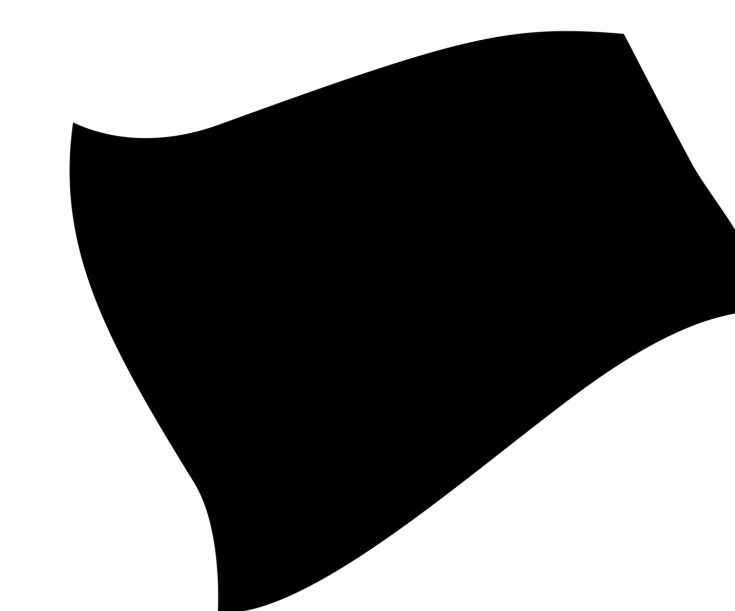
## **BLACK AND WHITE WITH DIAGONAL JOIN**

Displayed with a panel with the Driver's Kart number displayed. Unsportsmanlike behaviour must report to the Clerk of the Course immediately after race.



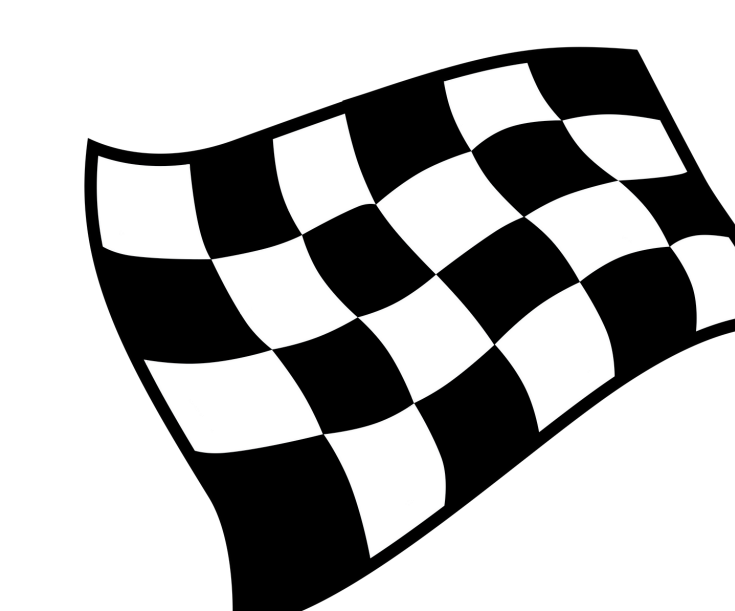
## **BLACK AND ORANGE FLAG**

Displayed with panel with Driver's Kart number. Mechanical / safety problem or does not comply with Rules. Return to in grid immediately following completion of next lap.



## **BLACK FLAG**

Displayed with panel which shows Kart number. Driver must return to the in grid immediately following completion of the next lap. The Driver may not re-enter the race.



## **BLACK AND WHITE CHEQUERED**

Black and white chequered flag indicates the end of the race.